

JAMES EDWARD

Comprehensively Cared For



Regina Road

, London, N4 3PT

Offers In Excess Of £475,000



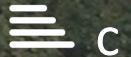
2



1



1



C

Regina Road



Description

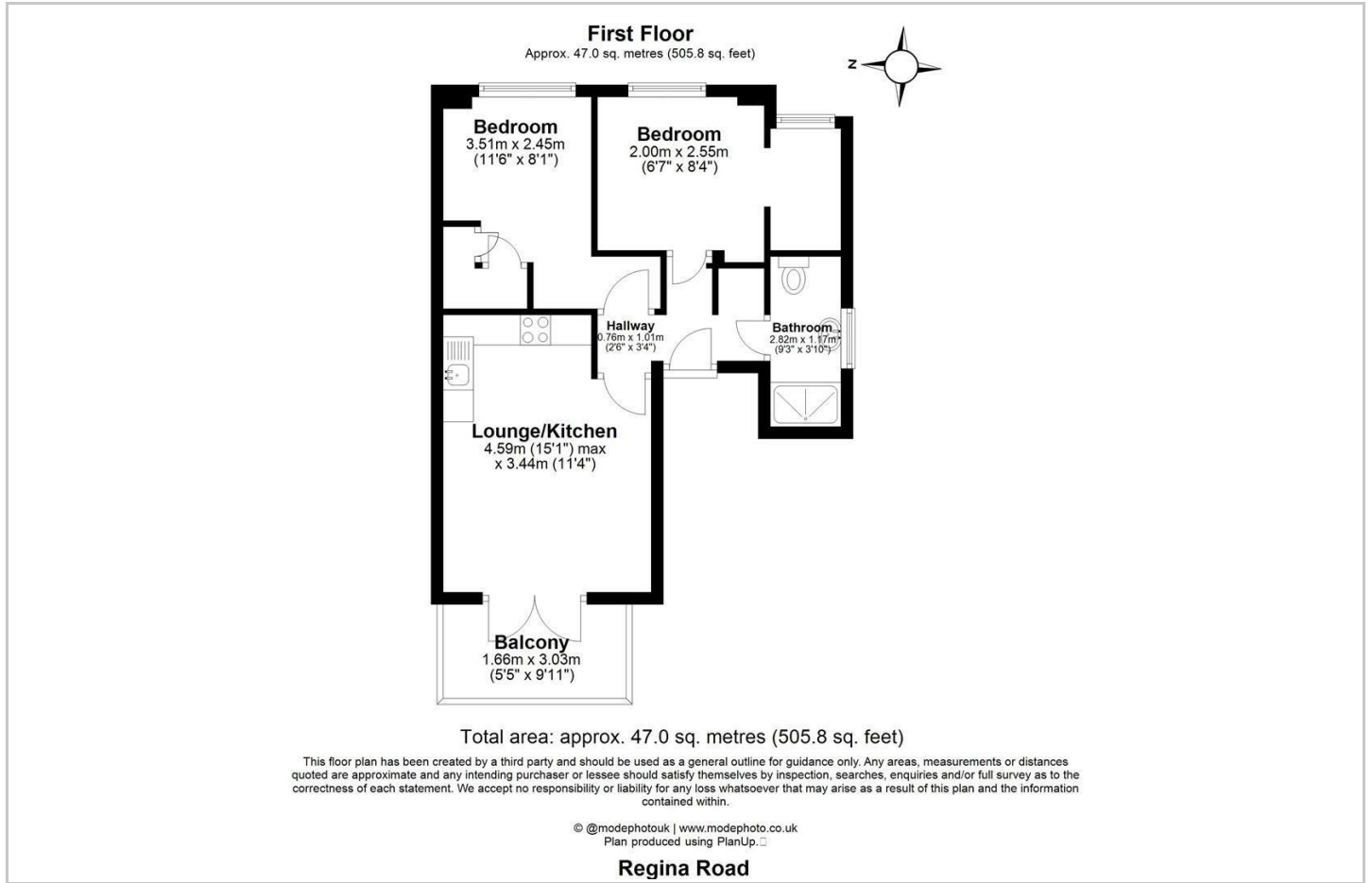
Smart two bedroom apartment with a private West facing terrace, just a short walk to the vibrant Stroud Green Road and Finsbury Park Station.

- Period Conversion
- 10 Minute Walk to Finsbury Park Station
- Open Plan Kitchen / Living Room
- Refurbished to a High Standard
- Private Terrace
- Two Bedrooms
- Close to High Street
- Built in Storage





Floor Plan



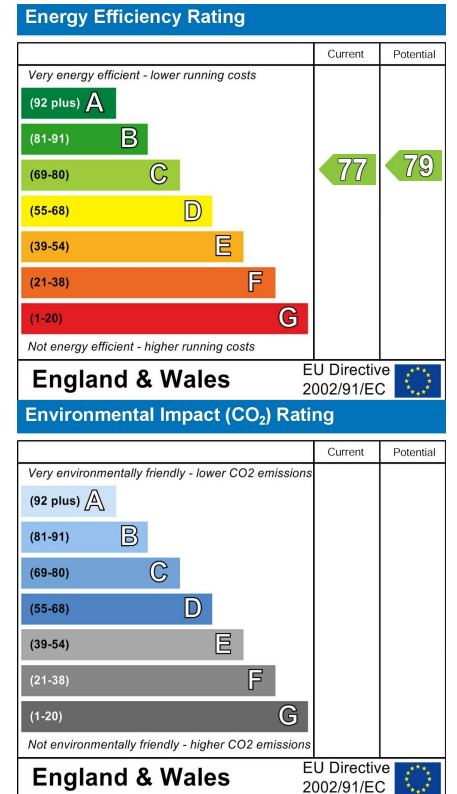
Area Map



Viewing

Please contact our James Edward Office on 020 7952 5197 if you wish to arrange a viewing appointment for this property or require further information.

Energy Efficiency Graph



These particulars, whilst believed to be accurate are set out as a general outline only for guidance and do not constitute any part of an offer or contract. Intending purchasers should not rely on them as statements of representation of fact, but must satisfy themselves by inspection or otherwise as to their accuracy. No person in this firm's employment has the authority to make or give any representation or warranty in respect of the property.

100 Highbury Park, London, N5 2XE

Tel: 020 7952 5197 Email: info@jamesedwardproperties.co.uk <https://www.jamesedwardproperties.co.uk>